

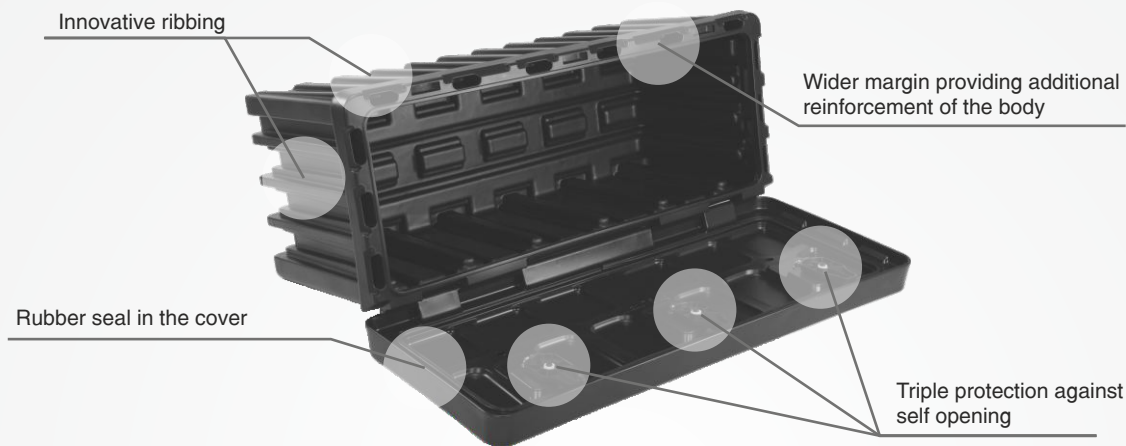
**External dimensions [mm]:** 1100x450x490  
**Total weight [kg]:** 12,6  
**Capacity [L]:** 175  
**Loading capacity [kg]:** 75  
**Composition:** polyethylene  
+ steel and polypropylene elements  
**Quantity per pallet (pcs):** 8  
**Loaded pallet weight [kg]:** 120  
**Loaded pallet size [cm]:** 120x90x200



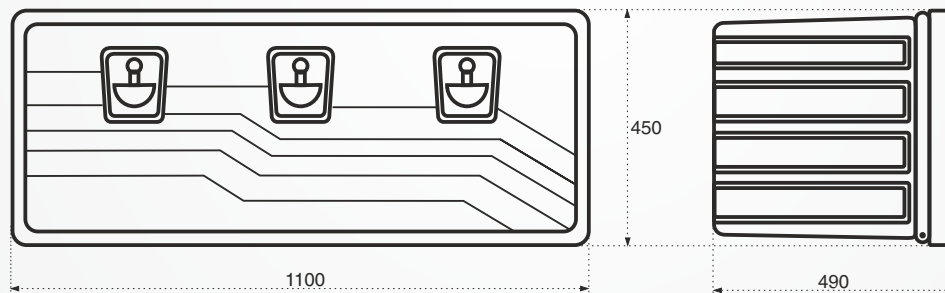
### Standard equipment

Three locks  
Steel hinges  
EDPM rubber seal

### Characteristics

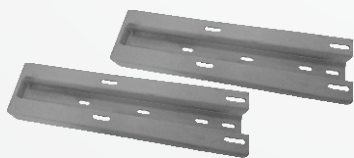


### Technical drawing - toolbox size 1100 x 450 x 490 [mm]

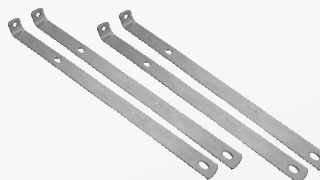


### Mounting kit recommended

Mounting kit R-type: 711003



Mounting kit L-type: 711007



### Spare parts

Handle: Z/04  
Rubber seal: S1911

### Quality

Made of best quality materials, **Smart-box** optimal payload depends, among the others from the type of mounting kit used. It is recommended to use the original mounting kit brand **Stabilo**.